



MISSOURI DEPARTMENT OF  
**HEALTH &  
SENIOR SERVICES**

# **Office of Minority Health and Health Equity**

Division of Community and Public Health

---

**Nathan James**

Health Equity Program Specialist

# Meet our awesome team



**Valerie Butler**

Special Professional  
Assistant



**Sabrina Blevins**

Lead Admin.  
Support Assistant



**Nathan James**

Health Equity  
Program Specialist



**Angel Surdin**

Office Chief

A dark blue background with a white network of dots and lines, resembling a molecular or digital structure, covering the entire page.

# **OUR MISSION**

**To promote health and safety  
through prevention, collaboration,  
education, innovation and response.**



# OUR VISION

Optimal health and safety for all  
Missourians, in all communities,  
for life.

A background graphic consisting of a network of white dots connected by thin white lines, set against a gradient orange background that transitions from a lighter shade at the top to a darker shade at the bottom. The dots and lines are more densely packed on the left side and become sparser towards the right.

# OUR VALUES

Excellence | Collaboration | Access  
Integrity | Accountability

# OUR ACTION

Our strategic plan includes six priorities that will help us achieve our mission and vision.

# Office of Minority Health and Health Equity



**Health Literacy  
Initiatives**



**Social Drivers of  
Health Dashboard**



**Health Equity  
Stakeholder Committee**



**Community  
Engagement**



MISSOURI DEPARTMENT OF  
**HEALTH &  
SENIOR SERVICES**

Office of Minority Health and Health Equity

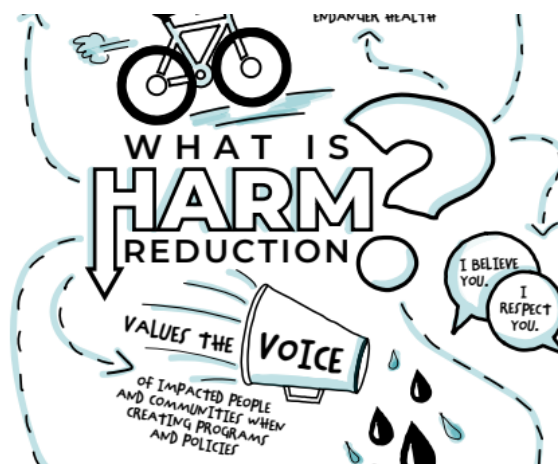
# Health Literacy

English

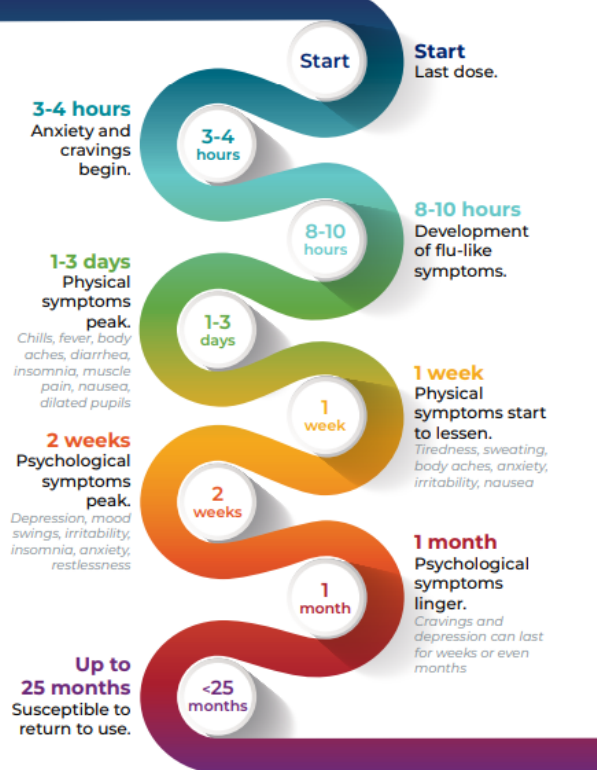
Spanish



Instead of	Replace With	Because
Addicts, junkies	People who use drugs (PWUD), people with Substance Use Disorder (SUD)	These terms honor the belief of many clinicians and people with substance use disorder that recovery is an ongoing and variable process
Former drug addicts, clean	People who used to use drugs, people in recovery, substance-free, abstinent	
Sober	Well, healthy, in recovery	
Relapse	Return to use	
Alcoholics	People with Alcohol Use Disorder (AUD)	
Risk factor, risky behavior	Potential, vulnerability	
Druga abuse.	Substance use. druqa use.	These terms reduce the



## RESPONDING TO OPIOIDS IN MISSOURI



Information from [Steve Rummier Hope Network](#)

**Administer Naloxone**

- Peel back the tab with the circle to open it.
- Do not prime or test the spray.
- Tilt their head back, insert the nozzle fully inside the nostril and press the plunger to dispense the contents of the product entirely.
- Additional doses can be given every two to three minutes until they are responsive.

**Rescue Breathing**

- If they are not breathing, you can begin giving rescue breaths.
- With the head back and the nose pinched, breathe into their mouth.
- Start with two breaths, then do one breath every five seconds.
- If necessary, and you are trained to do so, perform CPR.
- Keep going until help arrives.

**Wait for Help**

- Continue rescue breaths or CPR until help arrives.
- Stay with them. If you must leave, turn them on their side to prevent choking.
- If they wake up, explain what happened.



# MISSOURI DEPARTMENT OF HEALTH & SENIOR SERVICES

Office of Minority Health and Health Equity

# Webinars

## SAVE THE DATE

Missouri Veterans Commission: Addressing Social Drivers of Health  
*Come learn how the Missouri Veterans Commission addresses social drivers of health by helping veterans apply for benefits and resources that could improve their health.*

**APRIL 3, 2024**  
12 - 1 p.m.

Click [here](#) to register or scan the QR code






## SAVE THE DATE

Minority Mental Health Webinar Series  
*Learn more from professionals at the University of Missouri's Department of Psychiatry about ways to dispel myths and provide tips to address mental health disparities*

**Join us from 12 - 1 p.m.**

**July 24:** Dispelling Mental Health Myths  
**August 28:** Providing Mental Health Tips




Click [here](#) to register or scan the QR code




## SAVE THE DATE

SDOH Series: CPR, Heart Health and Health Equity  
*Learn more about bystander CPR data, the importance of learning CPR and how to effectively prepare for cardiac emergencies.*

**FEBRUARY 3, 2026**  
12 - 1 p.m.

Click [here](#) to register or scan the QR code







Office of Minority Health and Health Equity  
Bureau of Cancer and Chronic Disease Control

## SAVE THE DATE

Minority Engagement in Donation and Transplant Programs  
*Learn more about organ donation and transplants, and bring questions you have for our Organ and Tissue Donor Program to gain a clearer understanding of this vital and lifesaving act.*

**SEPTEMBER 16, 2025**  
12 - 1 p.m.

Click [here](#) to register or scan the QR code






Office of Minority Health and Health Equity

## SAVE THE DATE

Addressing Disparities in Alzheimer's: A Religiously-Tailored Approach  
*Learn how researchers and faith communities from Kansas City to St. Louis are creating innovative methods and building integrative spaces for Alzheimer's education and screening.*

**MARCH 18, 2025**  
12 - 1 p.m.

Click [here](#) to register or scan the QR code






Office of Minority Health and Health Equity

## SAVE THE DATE

SDOH Series: Radon, Lung Health and Health Equity  
*Learn more about radon risks, how they connect to lung cancer and how to take action to improve environmental health and health equity.*

**JANUARY 29, 2026**  
12 - 1 p.m.

Click [here](#) to register or scan the QR code






Office of Minority Health and Health Equity  
Bureau of Environmental Epidemiology

## SAVE THE DATE

Tobacco Prevention to Promote Health Equity  
*Learn more about tobacco and lung cancer disparities and resources to promote prevention efforts to improve health equity.*

**NOVEMBER 4, 2025**  
12 - 1 p.m.

Click [here](#) to register or scan the QR code






Office of Minority Health and Health Equity

## SAVE THE DATE

Missouri WIC: Promoting Health Equity  
*Come learn how WIC addresses health disparities, reduces infant mortality and increases the use of preventive care in the African American community.*

**FEBRUARY 22, 2024**  
Click below to register  
Webinar: 12 - 1 p.m.

Scan to register






Office of Minority Health and Health Equity

# SHIP - Social Drivers of Health



## Missouri's State Health Improvement Plan (SHIP)

Priority Issue 5: Social Drivers of Health

### Goals:

- Advance health equity in Missouri by creating and promoting a set of actionable resources that address the social determinants of health.
- Improve health equity by building and leveraging collaborative public health efforts.

# Social Drivers of Health Dashboard

DHSS Home » Healthy Living » Healthy Families » minorityhealth » sdh-dashboard

The Missouri Department of Health and Senior Services (DHSS) Social Drivers of Health Dashboard is designed to leverage data to address health disparities in Missouri. This dashboard can be a resource for local public health agencies, community organizations, policymakers, and Missouri citizens. The dashboard intends to make data easily accessible to stakeholders and citizens so that all Missourians can achieve optimal health and safety in their communities for life.

## Missouri's Social Drivers of Health Dashboard

**Social Drivers of Health** can be described as the social and economic conditions in which people are born, live, work, play, worship and age. All of these factors work together to determine a wide array of health outcomes or risks. The Social Drivers of Health allow for an all-encompassing view of the overall health of an individual within the community.

**These drivers** are centered around the fact that all people should have equal access and opportunity to achieve their best health, both mentally and physically. By displaying this data, individuals can be informed to make decisions that could impact their communities and address health disparities throughout the state.

Click on the [Social Drivers of Health](#) button to the right to navigate through each of following topics: Education, Household Income, Poverty Status, Food Assistance Programs, Unemployment and Uninsured.

Click on the [Unhoused Population](#) button to the right to explore data regarding Missouri's unhoused population throughout different regional and demographic breakouts.



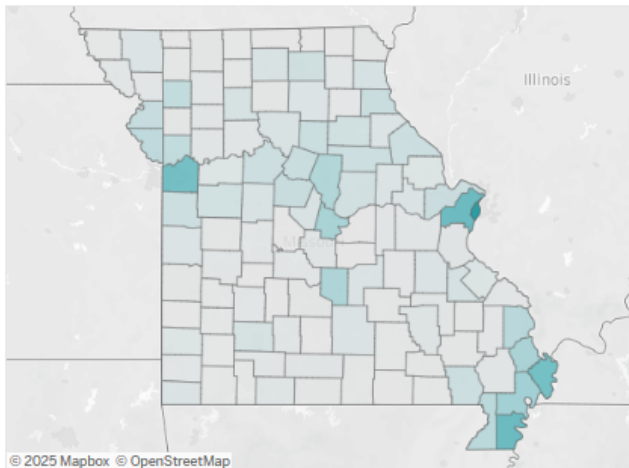
Click on a button below:

[Social Drivers of Health](#)

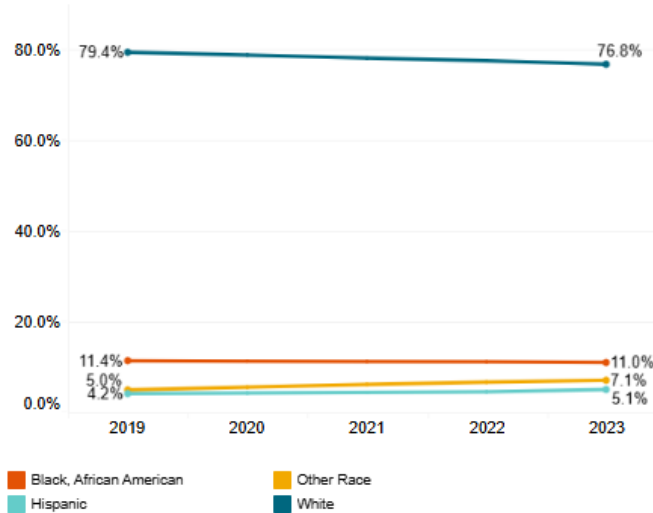
[Unhoused Population](#)

### Population Percentages by County and Selected Demographic

Select Year:  Select Population:  Map Legend: 0.1% 42.9%



### State Total Population by Race/Ethnicity



MISSOURI DEPARTMENT OF  
**HEALTH &  
SENIOR SERVICES**  
Office of Minority Health and Health Equity

# Social Drivers of Health Dashboard





Health Equity Stakeholder Committee Meeting

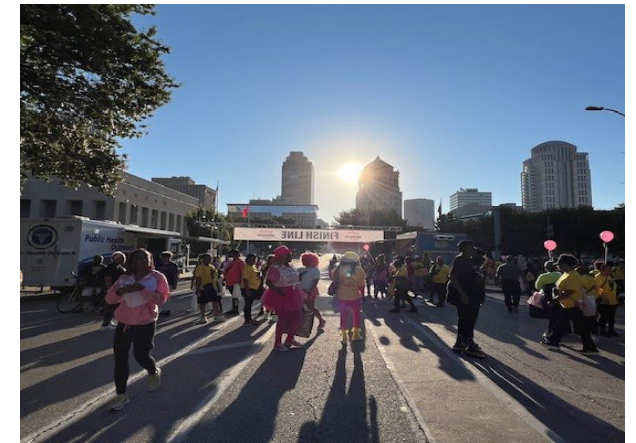


# Community Engagement





# Community Engagement, Pt. 2





MISSOURI DEPARTMENT OF  
**HEALTH &  
SENIOR SERVICES**

## **FAITH AND HEALTH SUMMIT 2026**





**Equipping community partners  
with information and tools**

# Helpful Resources



## Minority Health | Health & Senior Services

<https://health.mo.gov/living/families/minorityhealth/>

## Office of Minority Health | U.S. Health and Human Services

<https://minorityhealth.hhs.gov/>



## Ready in 3 | Health & Senior Services

<https://health.mo.gov/emergencies/readyin3/materials.php>



MISSOURI DEPARTMENT OF  
**HEALTH &**  
**SENIOR SERVICES**



**Thank you!**



Nathan.James@health.mo.gov



Health.Mo.Gov